



深圳华秋电子有限公司
Shenzhen Huaqiu Electronics Co., Ltd.

📍 深圳市福田区新一代产业园1栋5楼
5F, Building 1, New Generation Industrial Park, Futian District, Shenzhen, China

☎ +86 75583643663 ✉ vipsales@nextpcb.com

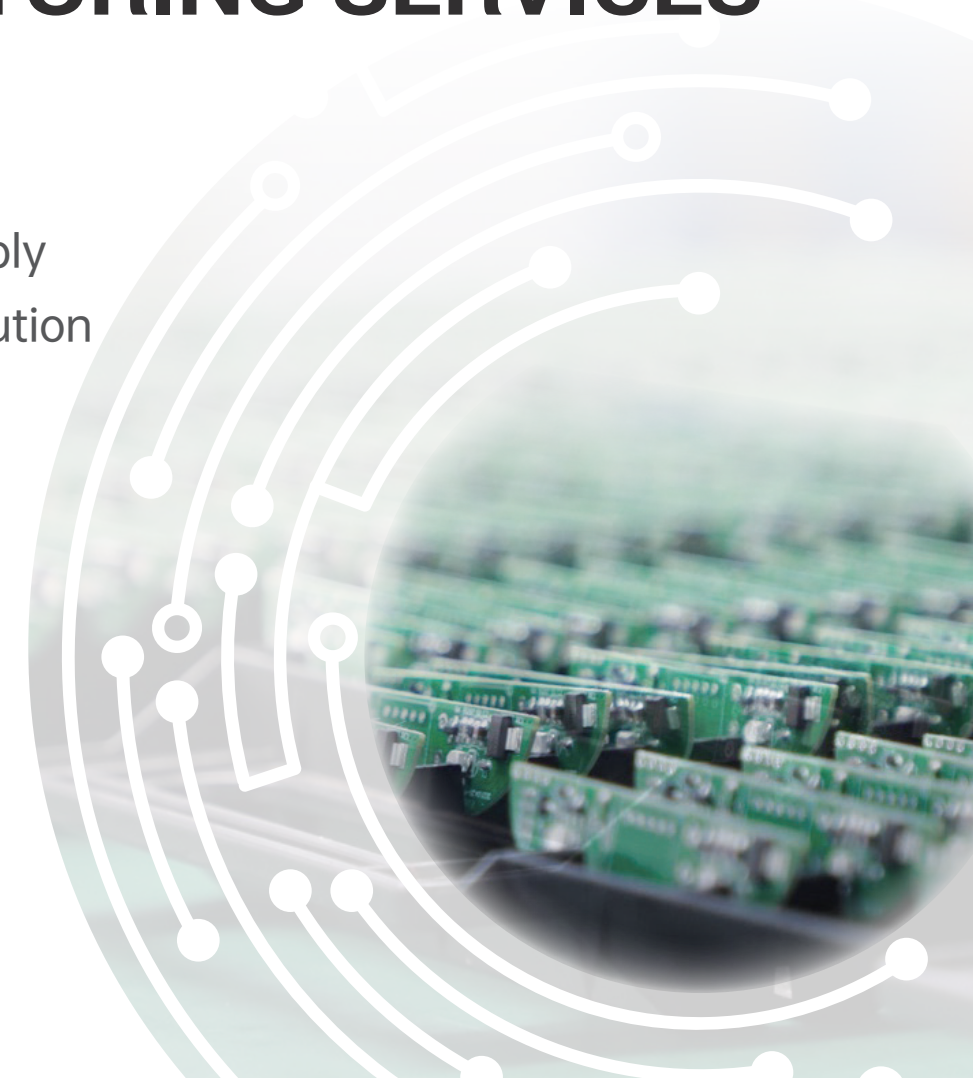
🌐 www.nextpcb.com 🌐 www.hqonline.com



The go-to solution for
PCBs that last a lifetime

COMPREHENSIVE ELECTRONICS MANUFACTURING SERVICES

- ◎ PCB Manufacture
- ◎ Turnkey PCB Assembly
- ◎ Components Distribution
- ◎ PCB DFM



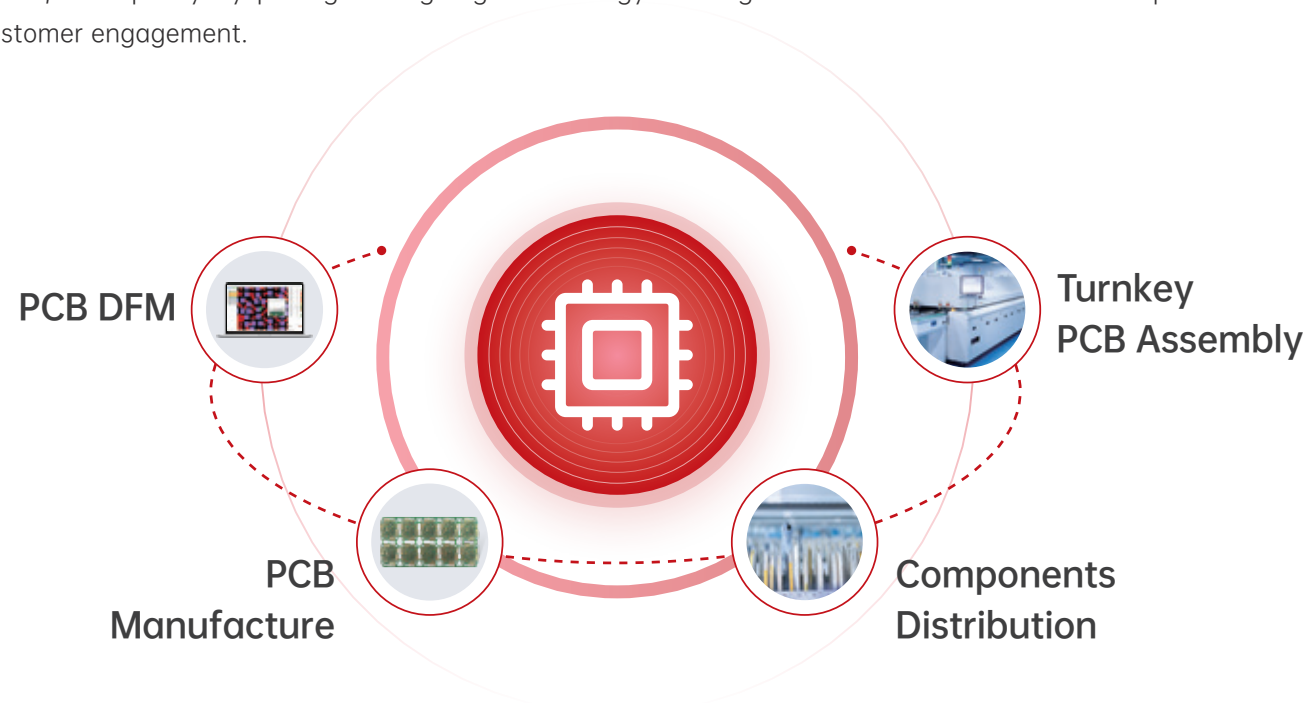


Reliable Multilayer
PCB Manufacturer



About NextPCB

Founded in 2011, NextPCB is a global leader in reliable and affordable PCB manufacturing and assembly, and has become a household name for dependable, cost-effective electronics. From rapid prototyping to mass production, we serve over 166 countries and regions from our 5 factories in China, delivering the optimal balance of cost, speed, and quality by pairing cutting-edge technology and digitization with a commitment to personalized customer engagement.



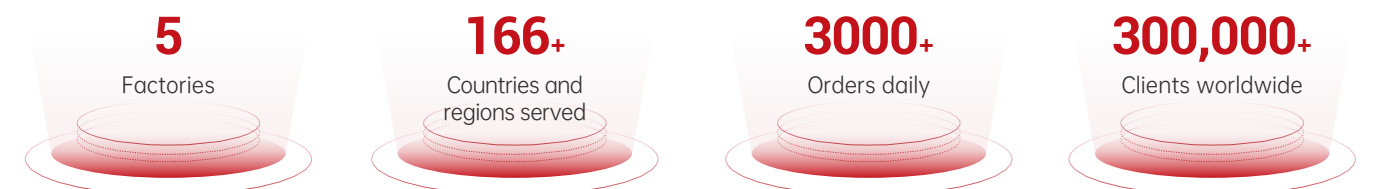
From its origins as an electronics knowledge platform, NextPCB has evolved into the world's leading industrial digital manufacturing platform. Uniting clients with precision manufacturing via proprietary online portals, in-house MES, and R&D, NextPCB is pioneering the future of digitized electronics manufacturing.



Access the world's electronics inventory with HQ Online, NextPCB's components distribution service. Our mature supply network and procurement capabilities provide you with direct access to over 600,000 competitively-priced parts from more than 3,000 Asian and international brands, keeping your projects on schedule and your costs low.



Utilizing over 15 years of in-house Design for Manufacture (DFM) expertise, NextPCB developed the free, multi-award-winning PCB analysis software suite HQDFM, revolutionizing how circuit board designers visualize and verify their designs from an electronics manufacturing standpoint.



Why NextPCB?

The Industry's experts

NextPCB boasts a workforce of over 1500 skilled technicians, project managers, software developers, sales and customer service personnel with an average of over 5 years experience in the electronics manufacturing industry.

For all electronics manufacturing needs

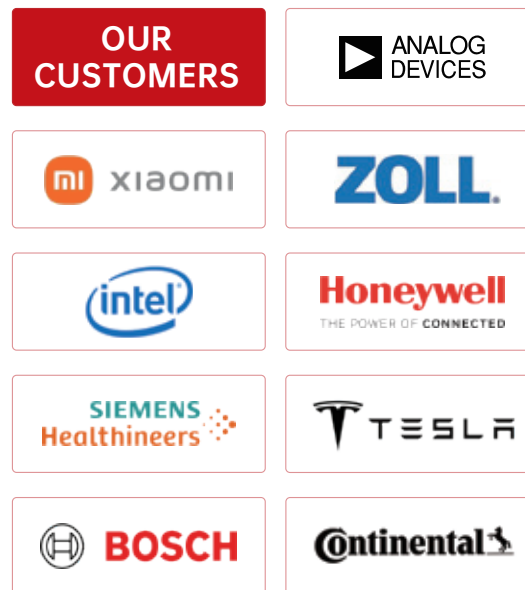
With 5 major factories, components distribution facilities and a robust supply chain network, NextPCB is tailored to providing complete electronics manufacturing solutions from prototype to mass production.

We are the factory

NextPCB is the factory, ensuring you get the best prices, lead times and technical assistance.

An Advocate for Electronics Innovation

NextPCB hosts the largest base of Chinese electronics enthusiasts and engineers, engaging over 6 million users on all its platforms. Our goal is to break down obstacles to electronics innovation globally by providing accessible tools and resources, empowering open-source development such as KiCad, and sponsoring promising projects via the NextPCB Accelerator campaign.



 **NextPCB**

PCB Manufacture



Applications



NextPCB operates two dedicated PCB fabrication facilities, with one specializing in prototypes and small batch production, and another focused on mass production. As of 2026, NextPCB's new intelligent manufacturing base adds four cutting-edge PCB production lines to the mix, boosting production capacity to 300,000 square meters a month and uniting PCB fabrication, PCB assembly, components storage and R&D under the same roof, creating a truly integrated one-stop shop.

High Reliability

Shengyi / KB A-grade materials
Advanced Equipment
Rigorous Quality Control

Fast Turnaround

From 24 hours turnaround
99.59% on-time delivery

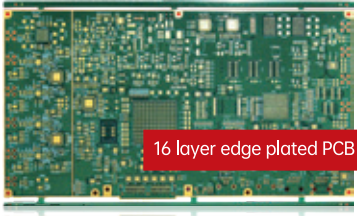
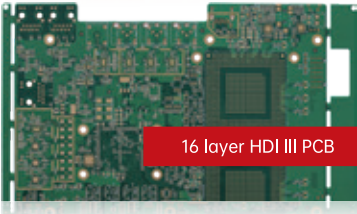
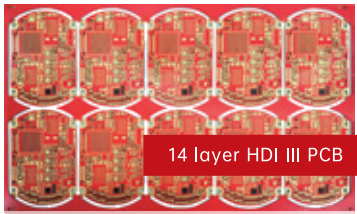
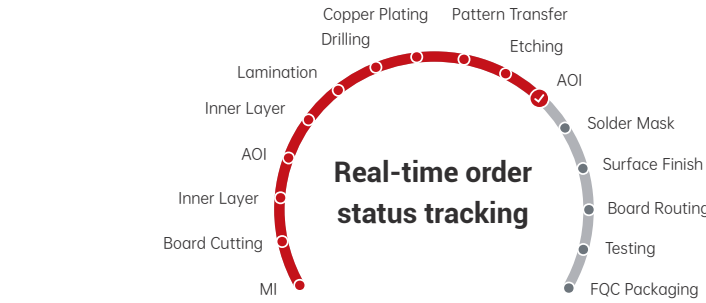
Precise Manufacturing

Complete traceability
Full AOI + Flying Probe Testing
98% first time pass rate
Only deliver fully qualified boards

NextPCB Jiangmen Smart Manufacturing
Base Industrial Park

Standard PCB Capabilities

Experience the speed and convenience of instant online quoting and real-time traceability from order to delivery via a single unified platform. NextPCB supports a generous selection of PCB types and customization options from high-density (HDI Class 3) and high-reliability (IPC Class 3) boards to full customization, including stack-up selection, castellated holes, and via capping.

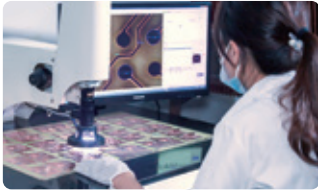


Instant Quote

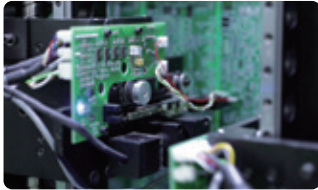
Circuit Layers	Up to 20 layers
HDI Capability	Up to HDI III designs
Materials	Shengyi / KB cores and laminates up to TG170
Surface Finishes	Leaded / Lead-free HASL, ENIG and OSP
Board Thickness	0.6 to 3.2 mm
Copper Thickness	4 oz
Smallest Trace width / spacing	3.5 / 3.5 mil
Drill and Via Capabilities	Blind / buried vias, microvias, via-in-pad filling and capping (POFV) and castellated holes
PCB Solder Mask Color	Green, blue, red, yellow, white, black, matte black
Extras	Custom stack-up, impedance control, microsection report, UL marking, beveled / chamfered edges, edge-plating and more
Production Time	From 24 hours



Design for Manufacture
(DFM) Review



Inner and Outer Layer
AOI Inspection



Flying Probe In-Circuit
Test (ICT)

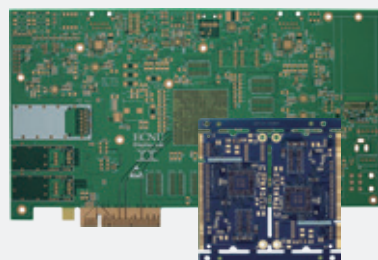


Impedance Control and
Microsection Analysis

Get instant online quotations via www.nextpcb.com

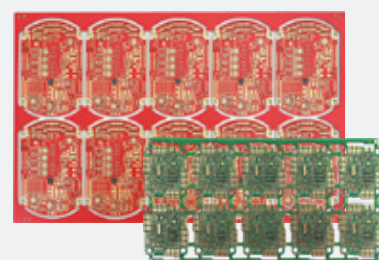
Advanced PCB Capabilities

NextPCB offers a diverse range of high-quality PCB manufacturing services for a wide range of industries. Whether you need complex high-speed laminates or maximum heat dissipation, NextPCB has the expertise and technology to deliver.



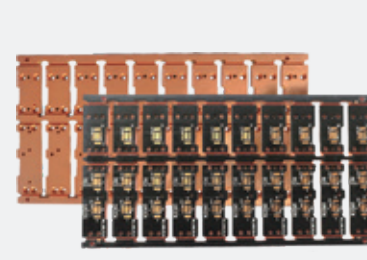
High-Speed / High-Frequency PCBs

- Impedance control, standard stackups
- Rogers / Isola / ITEQ / TUC / Panasonic laminates
- Backdrilling, smooth copper foils



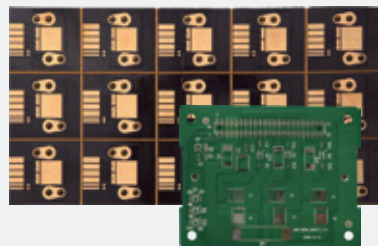
High Density Interconnect (HDI)

- Up to HDI Class 3
- Blind / buried vias, POEV, stacked vias
- 2.5mil trace width



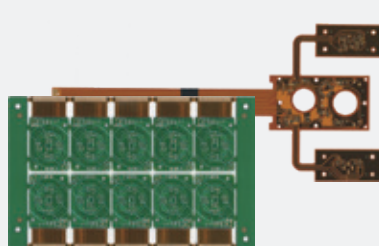
Metal Core PCBs

- Aluminum, copper, iron, stainless steel
- Single / double-sided, multilayer
- Insulated holes, countersunk / bore holes, z-axis milling, pedestal technology



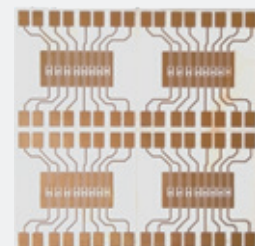
Heavy Copper PCBs

- Up to 10 oz thick copper
- Copper coin technology, step-up plating, controlled etching



Flex / Rigid-Flex PCBs

- Flex: 1 to 6 layers - Rigid: 2 to 32
- 0.1 to 0.25mm flex thickness
- Stiffeners, EMI shielding, laser or mold forming, adhesive backing



Ceramic PCBs

- Aluminum Oxide / Nitride and more
- DPC or DBC technologies
- 1 to 2 layers

High-TG

Low CTI

Halogen-free

Rogers

Hybrid Stackups

IPC Class 3

Inquire for more advanced PCB specifications and requirements, or request a quotation

vipsales@nextpcb.com

PCB Factory Showcase

Guangdong Shenzhen Factory

Prototype and small batch PCB production



- 10000m² floor space
- 230 employees including 32 engineers and 30 quality assurance technicians
- Production capacity: 20,000 square meters a month
- HDI Interconnect capability up to HDI III
- Quickturn production from 24 hours



Flying Probe Testing Room



Vertical Continuous Plating (VCP) Line



Automated Mechanical Drilling Room



Engineering Service Centre



Shenzhen Production Team



Electroplating Line

Jiangxi Jiujiang Factory

Mass production PCB production



- 140,000m² industrial park
- 350 employees including 20 engineers and 50 quality assurance technicians
- Production capacity: 100,000 square meters per month
- Fully automated state of the art production facilities established in 2019



Lamination Press Line



Flying Probe Testing room



Electroplating Line



Exposure and Imaging Room



Jiujiang Production Team



Pretreatment and Etching Line

Our Equipment

Mechanical/Laser Drill Hole



Mitsubishi Electric (Japan) GTW5 Series Laser Drilling Machine



Hans Laser Mechanical Drilling Machines



AbleTek (Taiwan) ADT-900XP2 X-ray Guided Drilling Machine

Copper Processing



UCE Group Brown Oxide Line



UCE Group Horizontal Deburr, Desmear and Electroless Plating Line



Commend Machinery (Taiwan) Electroplating Line

Solder mask, surface finish and mechanical processing



DP-OPT Equipment Inline Automatic Solder Mask Application Machine



UCE Group HASL Surface Finish Processing Line



GRUIPCB Fully Automatic CNC V-Cut Machine

Quality Assurance



m&p International (Germany) Bed of Nails Test Rig



Optima DS Series Inline Double-sided AOI Inspection Machine



Joint Stars Imagine AVI Series Automated Visual Inspection (AVI) Machine

 NextPCB

Turnkey PCB Assembly

Industry Leading Service, Quality and Capabilities

Complete full-feature turnkey PCB assembly for all requirements from prototyping to mass production including reliable PCB manufacture, parts sourcing and assembly with Design for Assembly (DFA) review.

Take advantage of superior global parts sourcing capabilities, or choose from 600k in-stock parts for expedited PCB assembly from 7 working days.

AOI, x-ray inspection, conformal coating, functional testing and FCC/CE certification services are also available. Talk to us about your needs and we'll tailor our services to you.



Functional Testing, Certification and Engineering Services

FUNCTIONAL TESTING SERVICES

Ensure every device works off the production line and into customers' hands with 100% functional testing and effectively reduce the defect rate to zero. Or sample test to verify the entire turnkey process and identify catastrophic issues early on.

Test procedures can be as complex as full software-enabled EOL testing to a simple power-up test.

ENVIRONMENTAL TESTING SERVICES

Verify your products can keep performing out in the field with stress tests and withstand temperature extremes, humid and high pressure environments etc.

Free Engineering Design for Assembly Review (DFA)

Get a second expert opinion and reduce production pitfalls with the thorough DFA review from NextPCB engineers.

- Footprint verification
- Panel design and component spacing
- BOM inconsistencies
- Common assembly problems

FCC/CE CERTIFICATION ASSISTANCE

Get assistance with obtaining FCC compliance, CE and other certifications such as UL and RoHS for your products.

FIRMWARE FLASHING SERVICES

Hand over the tedious task of microcontroller programming to NextPCB:

- Test jig and fixture support
- IC Programming
- Engineering support



Enterprise Services Tailored to your Business

One-on-one Account Manager

Communicate all your needs to your specialized team via your dedicated account manager

Superior Procurement Services

Let NextPCB find you the best prices, find hard-to-source parts and act as your purchasing agent on your behalf

Flexible Net 30 Days Payment Terms

Choose the payment term that suits your business

Complete Box Build Services

Minimize costs and let NextPCB handle everything from enclosure production, kitting, printing, cabling and certification

Pre-purchase Service

Beat price fluctuations and stock shortage by pre-purchasing components and have them stored in NextPCB facilities

Factory Audit Assistance

We welcome visits to evaluate our facilities and processes

“

We have contracted NextPCB twice now to make some high specification 6-layer prototypes, both times NextPCB have exceeded our expectations and produced the assembled PCBs to the same quality as our volume production house. We enjoyed working with Julia who is a very experienced engineer and made the whole process as pain free as possible.

We will definitely use NextPCB for other jobs and are happy to have found them.

Embedded Micro Technology



PCB Assembly Factory Showcase

Guangdong Dongguan Factory

Prototype and small batch PCB assembly



- 8000m² factory floor space
- 5000m² components warehouse
- Over 150 employees including 14 project leads and 20 quality assurance personnel.



SMT Assembly Lines



Through-hole Insertion Line



Wave Soldering Line



Manual Soldering and Assembly Line



Dongguan Production Team



ASM SIPLACE SMT Assembly Lines

Hunan Changsha Factory

Mass production PCB assembly



- 12000m² factory floor space
- 12000m² components warehouse
- Over 450 employees including 30 project leads 52 quality assurance personnel.



ASM Siplace SMT Assembly Lines



Incoming Parts Inspection (IQC)



Manual Soldering Stations



Components Warehouse



Changsha Production Team



Wave Soldering Line

Our Equipment

Production



ASM (SIEMENS) E by SIPLACE Pick & Place Machine



Continuous Wave Soldering Machine



JT JTR-1000D SMT Reflow Oven



Zhenxun ZX-CP300 BGA Rework Station



AUTOCK AT-320 Automatic Optical Depaneling Machine



Right ASE Fully Automated Solder Paste Printer

Quality inspection



ALeader ALD-ST2-300I Solder Paste Inspection Machine



TFT TFT350 First Article Inspection (FAI) Tester



Jutze Pre & Post Reflow AOI Machine

Testing and additional services



SCIENSCOPE VIEW X2000 BGA X-ray Inspection Machine

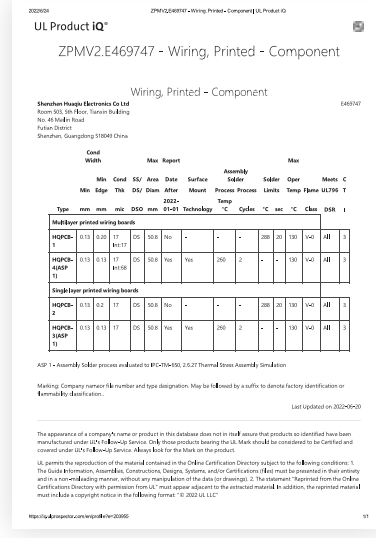


HR Precision High Temperature Test Chamber



Anda Automation Conformal Coating machine and Infrared (IR) Curing Oven

PCB and PCBA Certifications





Electronic Components Distributor



One of China's largest Distributors of Electronics Components based in the Silicon Valley of Hardware, Shenzhen, HQ Online leverages a mature supply chain to provide some of the industry's lowest prices from trustworthy sources.

In addition, HQ Online offers seamless procurement from major distributors including **Digikey, Mouser, Element14, Arrow, Verical, Avnet, RS Components, Rochester Electronics** and more thanks to smart integrations and established global procurement infrastructure.

- Over 600,000 parts from 3000+ Asian and global brands in stock now for fast delivery.
- Industry competitive prices thanks to a mature supply chain and procurement capabilities. Straight from the manufacturer or batch prices.
- Authenticity Guaranteed. Fakes, second-hand and refurbished parts are strictly forbidden.





PCB DFM

Free Design for Analysis Tool

HQDFM is a free PCB file viewer and DFM tool from NextPCB with advanced design for manufacturing and assembly (DFM and DFA) capabilities and PCB design tools. With over **400,000 users worldwide**, HQDFM's Design for manufacture capabilities cover a checklist of over **1200 detailed DFM guidelines** from signal integrity to footprint analysis and footprint checking, and also includes specialized manufacturing tools such as the Gerber panelizer, batch impedance calculator, Gerber comparison tool, and PCB cost calculator.

Suitable for

- Engineers
- Product Managers
- Procurement teams
- Students/Educators
- Hobbyists
- Contract Manufacturers

1200+
DFM / DFA Checks



6+ million
footprints



400,000+
worldwide users

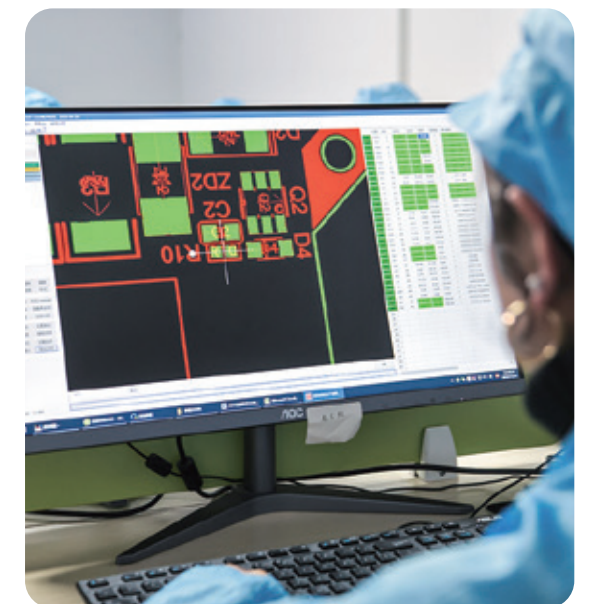


Get actionable insights from the experts

Unlike DRCs, HQDFM analyzes production data against IPC guidelines and real capabilities of manufacturers across the industry.

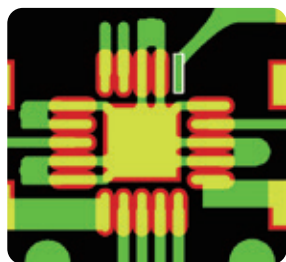
- Discover errors in advance with **one-click**
- Optimize designs for **manufacturability, cost and reliability**
- Advanced footprint checker for over **6 million components**
- Supports **Gerber RS-274x, X2, ODB++** and now native KiCad files

Download HQDFM for free and transform your PCB design to production workflow today.



DFM and DFA Examples

PCB DFM Analysis



Missing solder mask opening



Unconnected traces



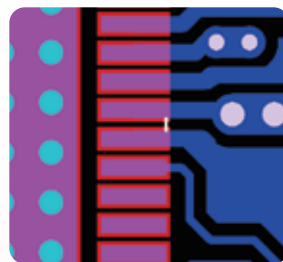
Annular ring width



Trace width and spacing



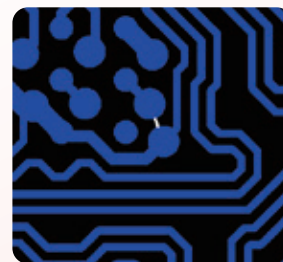
Trace to drill clearance



Solder Mask Dam

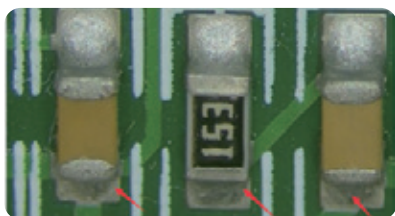


BGA Pad Size

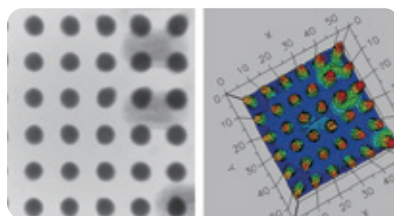


Pad spacing

PCB Assembly DFA Analysis



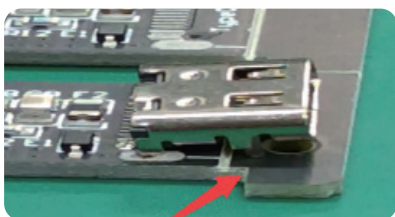
Chip passive pad spacing



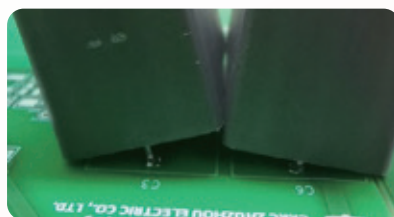
BGA pad-pin ratio



Underside pad contact length



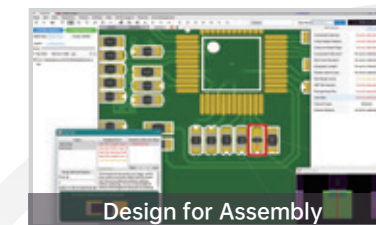
Mid-mount components obstruction



Component spacing



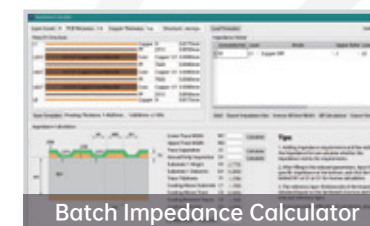
Double-sided through-hole components



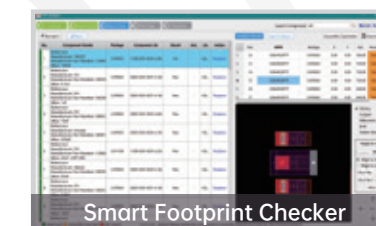
Design for Assembly



DFM Analysis



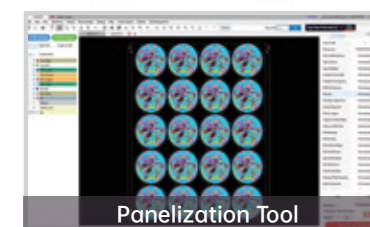
Batch Impedance Calculator



Smart Footprint Checker

HQDFM

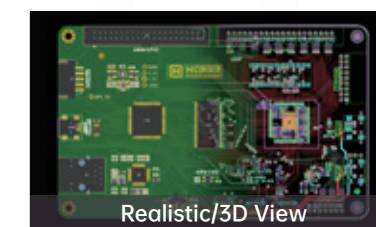
Your all in one
pre-production partner



Panelization Tool



HQ
DFM



Realistic/3D View

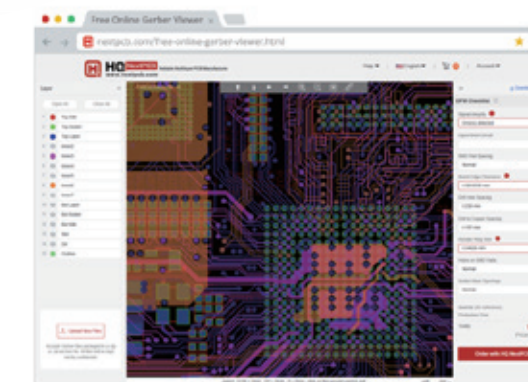
Download now at nextpcb.com/dfm

Desktop version for Windows PC only

Or try the online Gerber Viewer version

- Quick and easy Gerber navigation
- Supports top 5 web browsers
- No download, no registration, just drag and drop
- Free downloadable DFM report

www.nextpcb.com/free-online-gerber-viewer.html





We look forward
to working with you

Write to us vipsales@nextpcb.com

